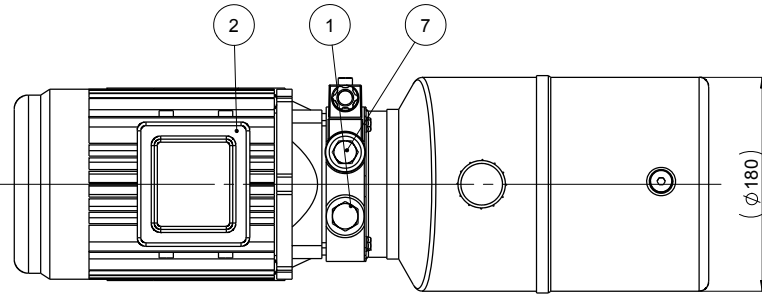
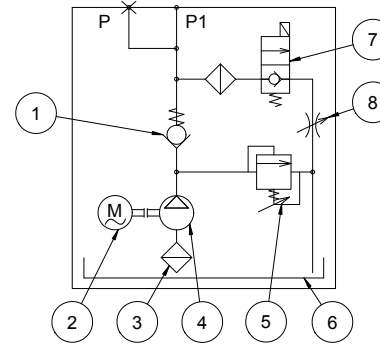
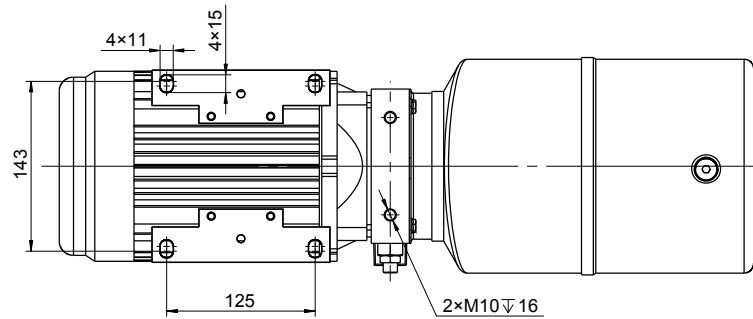


Hydraulic principle diagram



Side F



Technical parameters

- 1.Motor: AC380V/1.5KW/1450RPM/S1;
- 2.Pump: 2.5cc/r;
- 3.Solenoid valve voltage: AC220V;
- 4.Iron Tank: 6L;
- 5.relief valve setting pressure: 22MPa;
- 6.Installation: horizontal;
- 7.Port size: P/P1 port is G1/4.

8	throttle valve	
7	2P-2W solenoid valve	AC220V/DIN 43650
6	iron tank	6L
5	relief valve	range 12.8-24.8MPa
4	pump	2.5cc/r
3	oil inlet filter	250 μ m
2	motor	AC380V/1.5KW
1	check valve	0.3bar
Serial number	Part name	Description



UNLESS OTHERWISE SPECIFIED ALL TOLERANCES ARE +/- 1.5mm

ALL ANGLES +/- 1° UNLESS OTHERWISE SPECIFIED

SURFACE $\sqrt{3.2}$ MAX $\sqrt{25}$ MAX

GRH CORPORATION - CONFIDENTIAL AND PROPRIETARY NOTICE TO PERSONS RECEIVING THIS DRAWING AND/OR TECHNICAL INFORMATION.

THIS DOCUMENT, INCLUDING THE DRAWING AND INFORMATION CONTAINED THEREON, IS CONFIDENTIAL AND IS THE EXCLUSIVE PROPERTY OF GRH CORPORATION, AND IS MERELY ON LOAN AND SUBJECT TO RECALL BY GRH AT ANY TIME. BY TAKING POSSESSION OF THIS DOCUMENT, THE RECIPIENT ACKNOWLEDGES AND THAT NO PORTION OF THIS DOCUMENT MAY BE COPIED OR OTHERWISE REPRODUCED WITHOUT THE PRIOR WRITTEN CONSENT OF GRH. IN THE CASE OF CONFLICTING CONTRACTUAL PROVISIONS, THIS NOTICE SHALL GOVERN THE STATUS OF THIS DOCUMENT. COPYRIGHT 2014 GRH CORPORATION - ALL RIGHTS RESERVED.

UNLESS OTHERWISE SPECIFIED ALL DIMENSIONS ARE IN MILLIMETERS.SURFACE FINISH IN MICROMETERS Rd.

DRAWN BY / DATE B. PAN 20 Feb 23

CHECKED BY / DATE P.F. YOU 20 Feb 23

APPROVED BY / DATE KEVIN CHEN 20 Feb 23

MASS kg

SCALE 1:1

SHEET 1 OF 1

DO NOT SCALE

GRH PART CODE

AC-F09-2.5/G-1.5/380/1450/220-6H-C

DESCRIPTION

POWER UNIT

GRH PART NUMBER

CUSTOMER PART NUMBER

REV V01.00

